

**Pow. użytkowa 112,60 m<sup>2</sup>**

Lokal: **EGV-M4 / Wariant II**

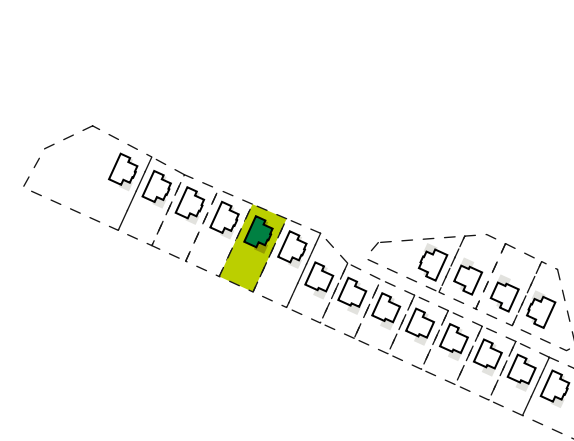
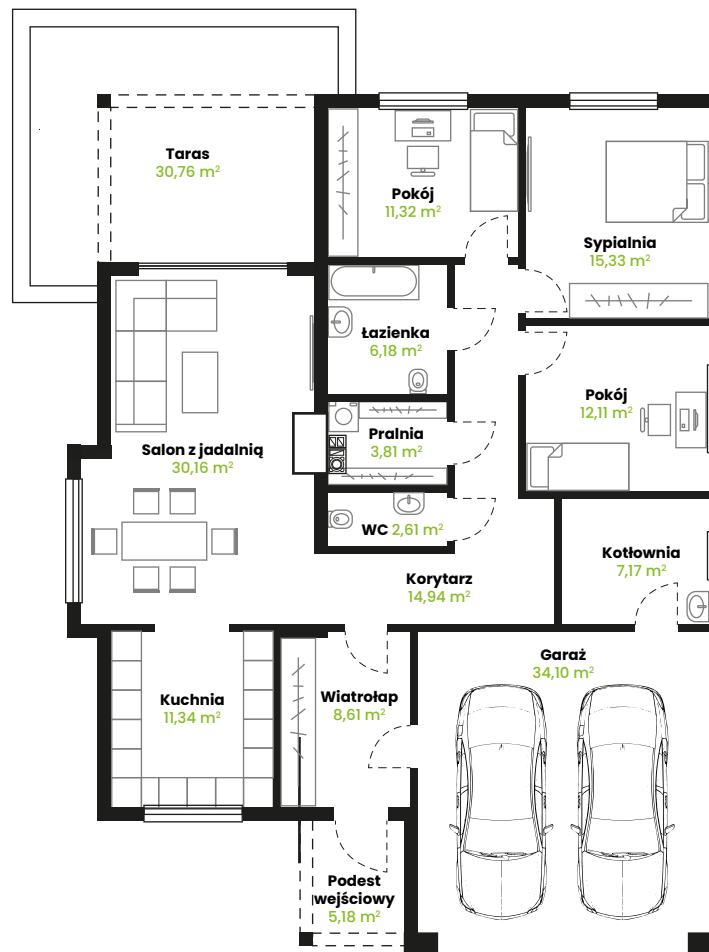
Metraż: **112,60 m<sup>2</sup>**

Pokoje: **4**

Garaż: **34,10 m<sup>2</sup>**

Ogródek: **876,99 m<sup>2</sup>**

Taras: **30,76 m<sup>2</sup>**



+48 790-135-790

biuro@gbcinvest.pl

www.gbcinvest.pl

ul. Ogrodowa 9 | 68-120 Iłowa