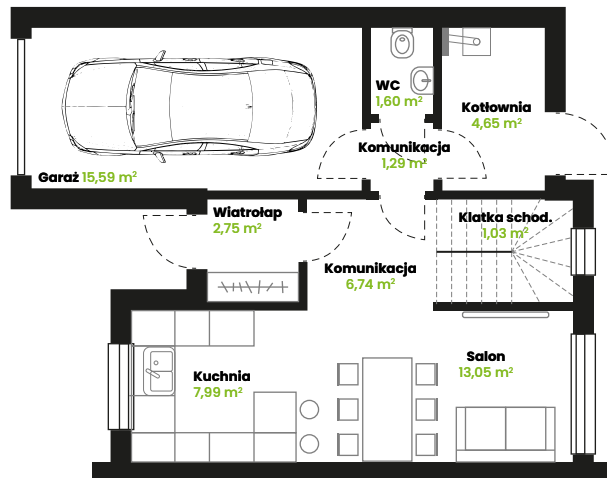




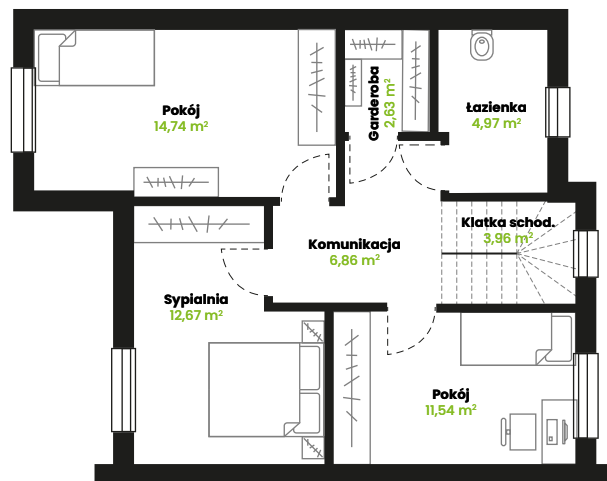
PARTER

**Pow. użytkowa 33,42 m<sup>2</sup>**

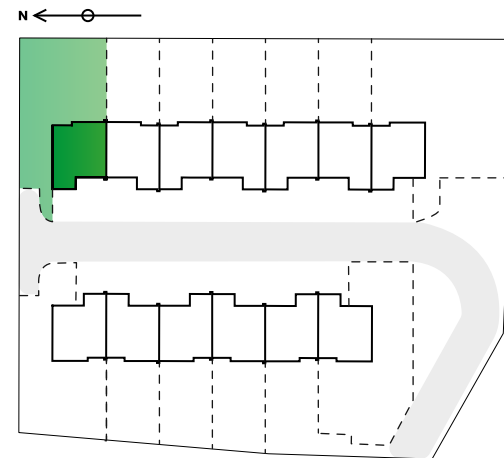


PIĘTRO

**Pow. użytkowa 53,41 m<sup>2</sup>**



Lokal:	<b>OA-M7</b>
Metraż:	<b>86,83 m<sup>2</sup></b>
Pokoje:	<b>4</b>
Garaż:	<b>15,59 m<sup>2</sup></b>
Ogródek:	<b>252,57 m<sup>2</sup></b>
Taras:	<b>9,59 m<sup>2</sup></b>



+48 790-135-790

biuro@gbcinvest.pl

www.gbcinvest.pl

ul. Ogrodowa 9 | 68-120 Iłowa